



Legend

MS4_Inspections_2018

ST_Outfall

★ Yes

StormwaterPoints 2016

ST_Outfall

★ Yes

— Waterlines

Roads

— Roads

StormwaterLines

— <all other values>

STRUC_TYPE

→ DITCH

→ PIPE

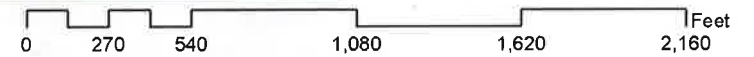
→ STREAM/CANAL

Waterbodies

UrbanizedArea_USCensus



1 inch = 392 feet



Effingham County MS4 Outfall Map